

ANNUAL REPORT



RIGHTS WITH RESPONSIBILITIES

2016/17

2073/74

PRESIDENT'S MESSAGE

National Association of PLWHA in Nepal (NAP+N) is a pioneering institution working to preserve the rights of people living with HIV in Nepal. It's been 13 years that we are publishing the Annual Report. I am pleased to present the 13th Annual Report for the fiscal year 2073/2074 (2016/2017). HIV is a serious issue of the present world and Nepal is no exception. NAP+N is working very closely to achieve the Sustainable Development Goals (SDGs) to meet other nationally set health and development targets. Hence, the role of national network (NAP+N) is inevitable and crucial. Moreover, it is impossible to end AIDS by 2030 without the involvement of key stakeholders like NAP+N. NAP+N is also working very closely with CCM-Nepal to implement Global Fund programs in the area of TB, HIV and Malaria.



Mr. Achut Sitaula
President


This report on "Best Practices and Lessons from various programs conducted under NAP+N" intends to express the result of combine efforts of all community based organizations, advocates, government authorities, hospitals, Networks/Federations, local bodies, committees and individuals in bringing changes in HIV and AIDS service delivery at local level. It also demonstrates our dynamism and our ability to turn around quickly to address gaps in HIV responses and support people living with HIV, in all their diversity, to lead changes to improve the quality of their lives.

We would like to sincerely acknowledge National Center for AIDS and STD Control (NCASC), CCM, Save the Children/Global Fund, FHI 360, Asia Pacific Network for PLHIVs (APN+), D/PHOs, NGOs and CBOs through which the HIV prevention program were carried out smoothly and completed with success.

My particular thanks go to Mr. Amrit Bikram Rai, Mr. Sadhuram Sapkota, Mr. Suresh Prasad Dhungana, Mr. Warren Basnyat, Ms. Shova Bohora, Mr. Prakash Yogi and Ms. Kyarun Rajthala for their hard work to give this report a final shape. Finally, my deep gratitude goes to the whole team of NAP+N for handling the overall process and providing the necessary technical and practical support in accomplishing this report.

Mr. Achut Sitaula
President

GLOSSARY OF ABBREVIATION



AIDS	: Acquired Immuno-deficiency Syndrome
APN+	: Asia Pacific Network of PLHIVs
ARV	: Anti-Retroviral Drugs
ART	: Anti-Retroviral Therapy
CABA	: Children Affected by AIDS
CBOs	: Community Based Organizations
CCM	: Country Coordinating Mechanism
CHBC	: Community Home-based Care
GFATM	: Global Fund to Fight AIDS, Tuberculosis & Malaria
HIV	: Human Immuno-deficiency Syndrome
IDUs	: Injecting Drug Users
INGOs	: International Non-Government Organizations
MATA	: Monitoring of Access to Treatment for PLHIVs in Nepal
NCASC	: National Centre for AIDS and STD Control
NGOs	: Non-Government Organizations
PLHIV	: People Living with HIV
S & D	: Stigma and Discrimination
STIs	: Sexually Transmitted Infections
UN	: United Nations
VCT	: Voluntary Counseling and Testing

TABLE OF CONTENTS

5

COVERAGE MAP OF NAP+N

16

EVENTS

6

INTRODUCTION

18

FUNDING AGENCIES

7

ABOUT NAP+N

19

OUR PARTNERS

10

2073/74 BY THE NUMBERS

11

LIST OF PROJECT

TARGETED INTERVENTION SERVICES FOR PLHIVs

THE GLOBAL FUND: HIV PROGRAM

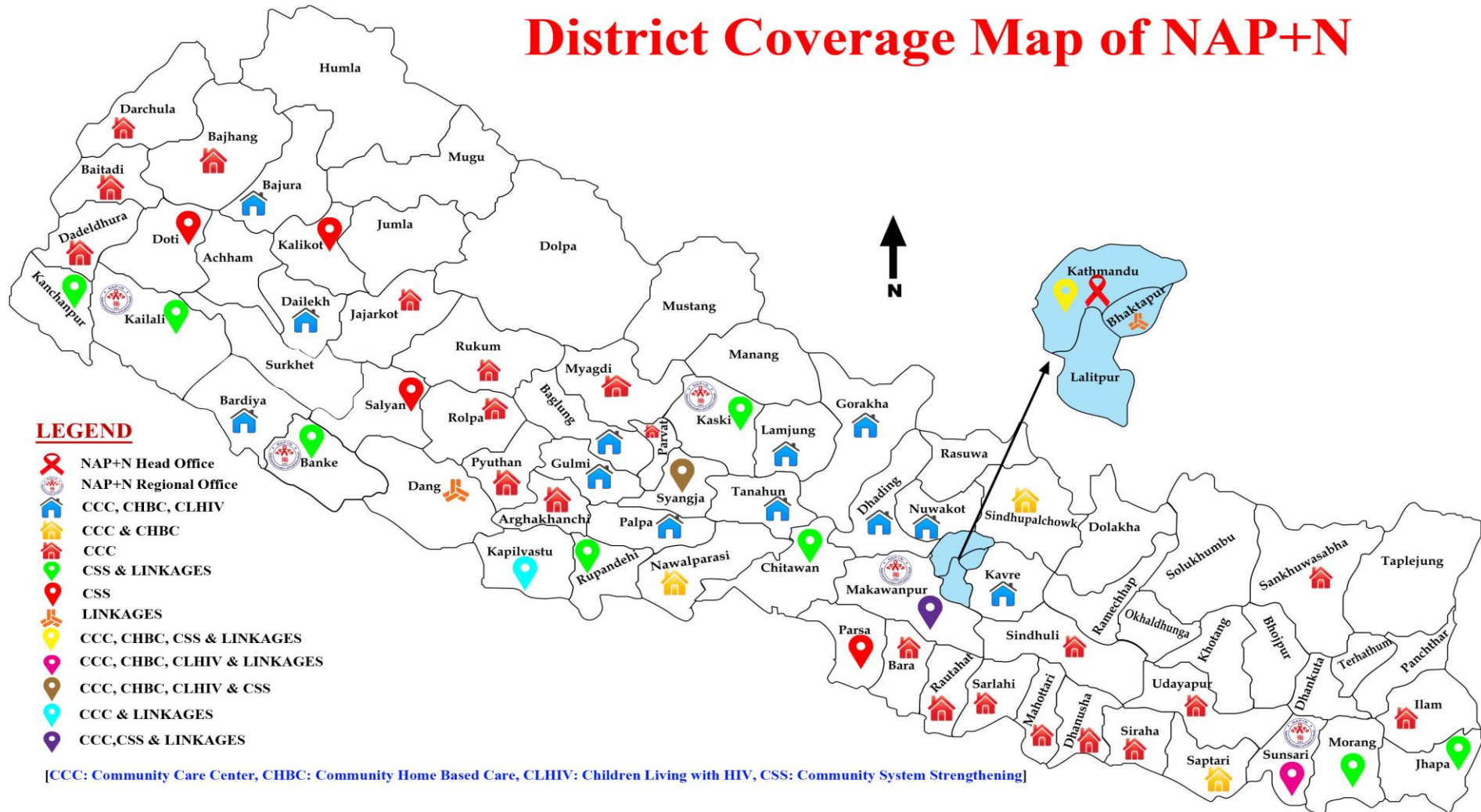
CBOs STRENGTHENING

LINKAGES

MATA RESEARCH

COVERAGE MAP OF NAP+N

District Coverage Map of NAP+N





INTRODUCTION

MISSION:

Strengthen the voice of PLHIV through formation and strengthening of networks and association of PLHIV to respond to the challenges of HIV.

VISION:

Create favorable environment for access to treatment, care and support for PLHA and ensure quality of life of individual PLHIV in Nepalese society.

GOAL:

To ensure that PLHIV understand and enjoy their fundamental rights irrespective of religion, race, caste, gender, sexual orientation and social and economic status.

TARGET GROUPS:

All people of Nepal Living with HIV and AIDS are the main target for positive prevention.

- Injecting Drug users (IDUs)
- Female Sex workers (FSWs)
- Clients of Sex workers (CSWs)
- Male Sex with Male (MSM-Sexual minorities) and
- Seasonal Labor Migrants (SLMs)

ABOUT NAP+N

INTRODUCTION OF THE ORGANIZATION

The National Association of People living with HIV and AIDS (NAP+N) was established after the first national consultation of PLHIVs in 2003. This historic event, succeeded in bringing 30 PLHIV participants from across the country to agree to one common goal: to unite all those living with the virus in Nepal and fight back.

NAP+N has focused on building the capacity of local PLHIV groups to respond appropriately to the needs of PLHIVs in area of advocacy, care and support, counseling, raising community awareness, providing information and education and improving access to the healthcare and legal services. NAP+N is the largest network of grassroots organizations working on the frontlines of this concentrated epidemic.

At the national level, NAP+N represents in NAC, NACC, HIV Board

and CCM as well represents in various national committees and works closely with NCASC, UN theme groups, governments, national and international organizations. Internationally, NAP+N have formal relationships with numerous national and international agencies including Global Fund, Save the Children, USAID, Pooled Fund, APN+.NAPN has focused on building the capacity of local PLHIV groups to respond appropriately to the needs of PLHIVs in area of advocacy, care and support, counseling, raising community awareness, providing information and education and improving access to the healthcare and legal services. NAPN is the largest network of grassroots organizations working on the frontlines of this epidemic.

NAP+N is committed towards the promotion of autonomy and empowerment of PLHIVs which will help them make informed decision. NAP+N ensure that PLHIVs are in the forefront of policy making debates and

their meaningful involvement at all levels is essential. The network is working towards multi-sectored collaboration and aims to develop strong working partnership with Non-governmental Organizations (NGOs), the government and the private sectors.

Currently there are over 75 organizations affiliated to NAP+N. NAP+N currently has 5 regional offices in Dharan (Eastern Development Region), Chitwan (Central Development Region), Pokhara (Western Development Region) and Nepalgunj (Mid Western Development Region) and Dhangadi (Far Western Development region). NAP+N has its central secretariat in Samakhushi, Ring Road, Kathmandu.

The NAP+N and other Regional Offices are responsible for formulating programs as per policy and plans, implementation, use of financial resources and accountability, and monitoring and evaluation. NAPN is currently implementing the Nepal Government Targeted Intervention Program on PLHIV component that supports 19 CBOs in 19 districts under NCASC and 42 PLHIV partner CBOs in 40 districts through Save the Children/GFATM grants. NAPN also works on network strengthening by providing assistance to 5 regional

offices and the central Secretariat with the support from FHI/Linkages project. Similarly, Asia Pacific Network of PLHIVs (APN+) has supported for the Advocacy and capacity building on Hepatitis C, HIV Co-infection and sexual reproductive health rights and Monitoring of Access to Treatment.

During this four years NAP+N has expanded its network to bring the grass root level organization in one umbrella, approaching the different mobilization for its members, also by exposing PLHIVs in the society for positive prevention and capacity building of the grass root level organizations.

OBJECTIVES

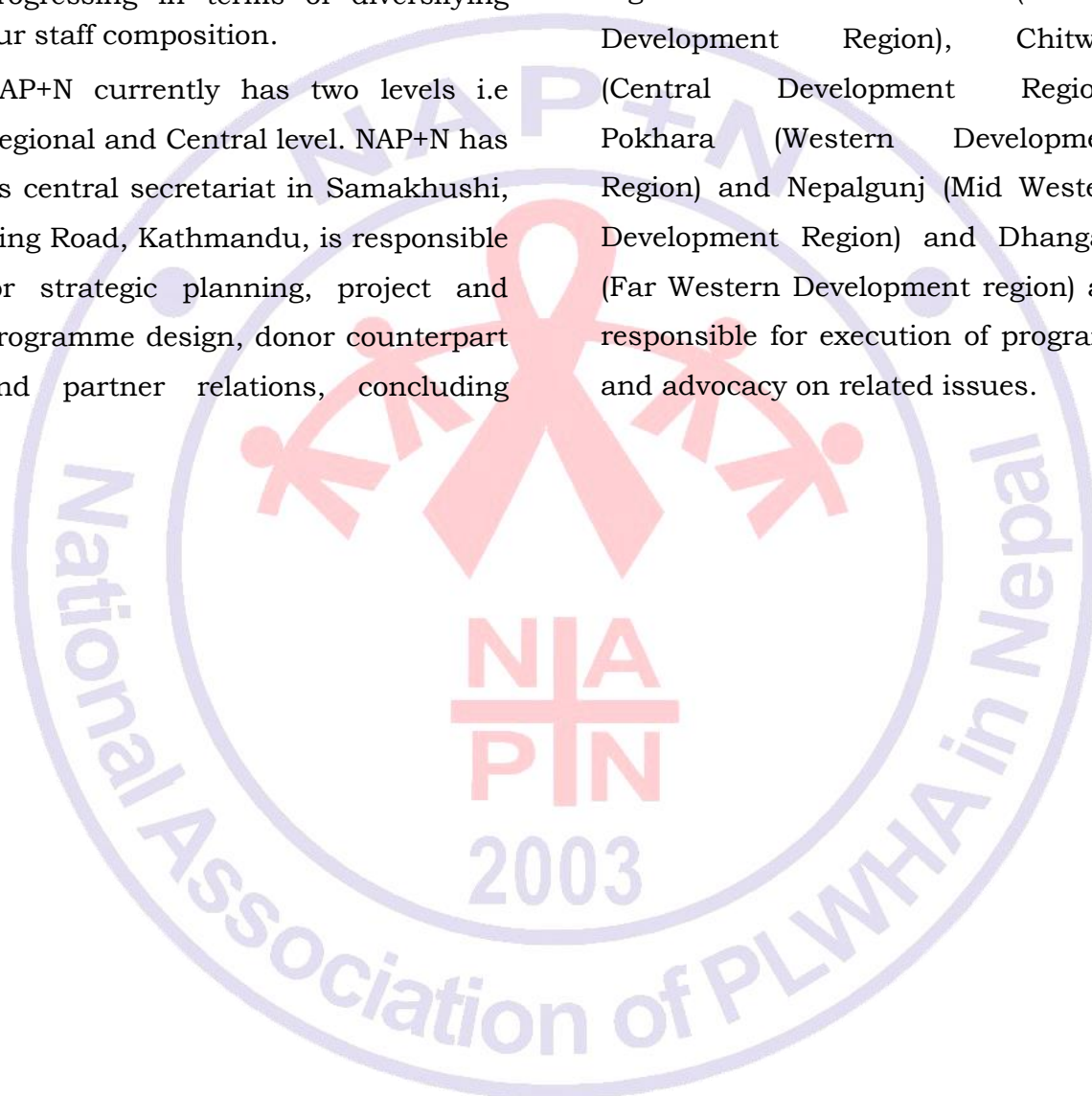
- To build capacity of the network towards the institutionalization
- To build capacity of PLHIV based Community Based Organizations
- To advocate lobby and facilitate mainstreaming of HIV related issues in national agenda
- To work towards ensuring universal access of PLHIV to essential standard services (treatment, care and support) of Nepal

HUMAN RESOURCES

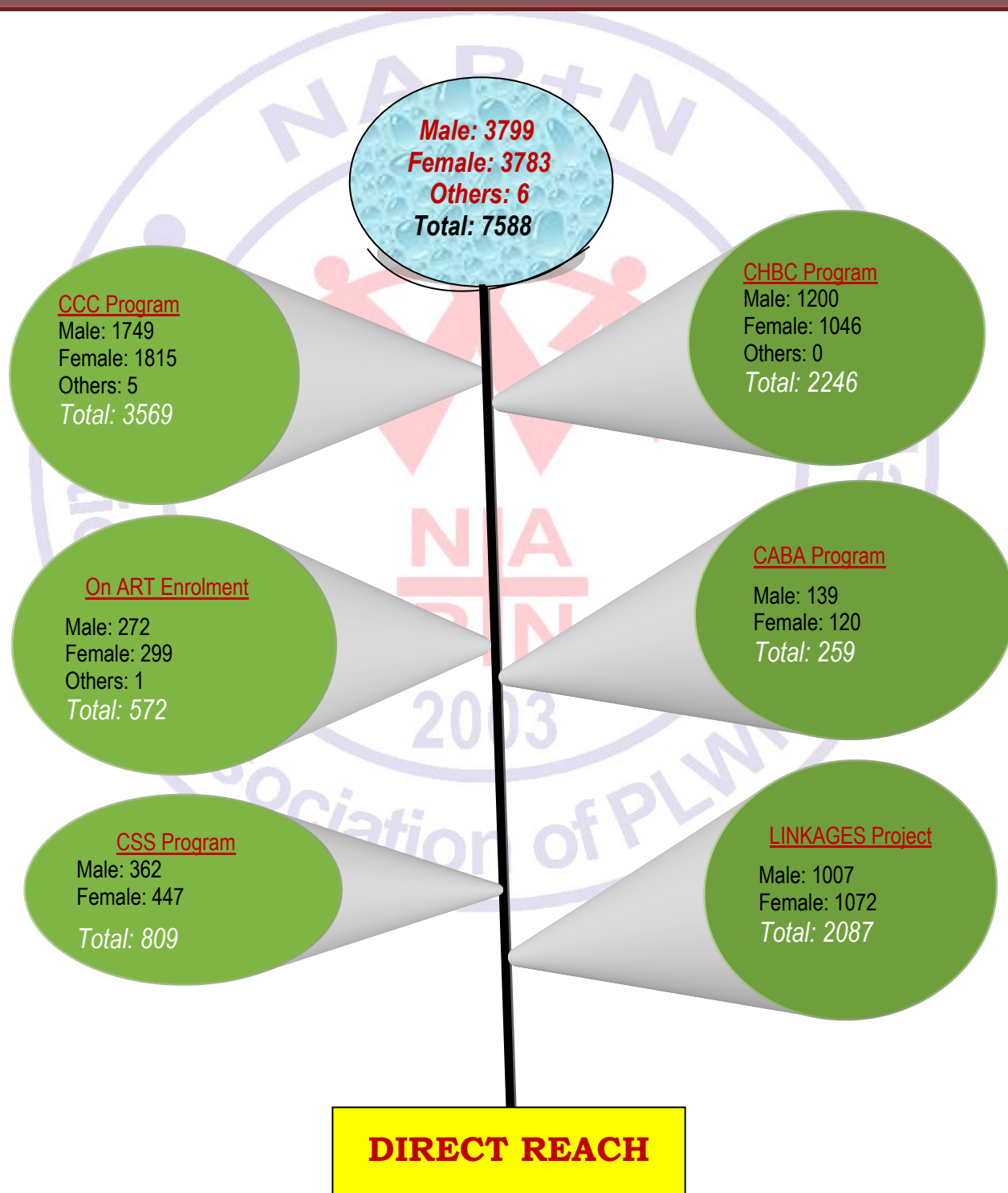
NAP+N has an inclusive human resource policy. In 2016, NAP+N had 36 staffs and 10 volunteers, of whom 20 were men and 26 were women. NAP+N is committed to gender equity and diversity and we are positively progressing in terms of diversifying our staff composition.

NAP+N currently has two levels i.e Regional and Central level. NAP+N has its central secretariat in Samakhushi, Ring Road, Kathmandu, is responsible for strategic planning, project and programme design, donor counterpart and partner relations, concluding

project and programme agreements, financial management, policy and goal setting, organisational structure, staffing, implementation of programme and project activities, monitoring and evaluation. And, regional offices of Dharan (Eastern Development Region), Chitwan (Central Development Region), Pokhara (Western Development Region) and Nepalgunj (Mid Western Development Region) and Dhangadi (Far Western Development region) are responsible for execution of programs and advocacy on related issues.



2073/74 BY THE NUMBERS



LIST OF PROJECTS



CCC

Targeted
Intervention
Services
for
PLHIVs

Project Goal: To reduce morbidity related to HIV and related complications, prevent HIV transmission and improve quality of life for PLHIV and their families.

Working Districts: Illam, Sankhuwasabha, Udayapur, Dhankuta, Siraha, Mahottari, Sindhuli, Sarlahi, Bhaktapur, Bara, Myagdi, Parbat, Kalikot, Salyan, Rolpa, Rukum, Okhaldhunga, Jajarkot, Darchula.

The “Targeted Intervention (TI) services for PLHIVs” (Phase I) was initiated in 2011, to care, support and treatment services. Pooled Fund through Nepal Government National Center for AIDS and STD Control (NCASC) funded this project for three and half years. Similarly, the second phase has also implemented through NAP+N. And now this was the third phase, NAP+N has been implemented project on “TI services for PLHIVs” supported by NCASC and in selected 19 districts of Nepal through establishing 19 Community Care Centers (CCC).

Target Population: People Living with HIV and AIDS (PLHIVs) and their families.

Project Period: 16 December, 2016 to 15 July, 2017.

Funding Agencies: Pooled Fund through Nepal Government National Center for AIDS and STD Control (NCASC).



CCC/CHBC/CABA

The Global Fund:
HIV Program

Project Goal: To achieve optimized IRRTR 90-90-90 by 2020 and ending AIDS by 2030.

Working Districts: Bajura, Dadeldhura, Bajhang, Baitadi, Pyuthan, Dailekh, Bardiya, Nawalparasi, Gorkha, Tanahun, Lamjung, Gulmi, Syangja, Baglung, Arghakhanchi, Kapilvastu, Palpa, Kathmandu, Kavre, Dhanusha, Makwanpur, Sindhupalchok, Dhading, Nuwakot, Rautahat, Saptari & Sunsari.

NAP+N has been implementing The Global Fund: HIV Program to implement CCC, CHBC Comprehensive package program in 27 districts through local PLHIVs led organization. This will fulfill the gap in HIV intervention program and will certainly support to achieve the goal established by the nation. Furthermore, they are mobilizing PLHIV to work for PLHIV which helps to address all needs and issues related to PLHIVs. As a result, the program has achieved its best outcomes in these years. By knowing these facts, Government has also developed the strategy to involve the PLHIV led organization for implementing the Targeted Intervention program for PLHIVs.

Target Population: People Living with HIV and AIDS (PLHIVs) and their families.

Project Period: 1 September, 2016 to 15 July, 2017.

Funding Agencies: Global Fund through Save the Children International.



Since 2009, NAP+N is the partner organization of Save the Children International. NAP+N has been implementing project on “Scaling up coverage and quality of HIV and AIDS prevention targeted to most at risk Population and treatment care and support service to PLHIV in Nepal” supported by Global Fund as sub recipient and has implemented it through its member CBOs in 15 districts in 2016/17.

CBOs STRENGTHENING

“Scaling up coverage and quality of HIV and AIDS prevention targeted to most at risk Population and treatment care and support service to PLHIV in Nepal”

Project Goal: To achieve optimized IRRTR 90-90-90 by 2020 and ending AIDS by 2030.

Working Districts: Jhapa, Morang, Parsa, Kathmandu, Chitwan, Kaski, Rupendehi, Syangja, Kalikot, Surkhet, Banke, Salyan, Kailali, Kanchanpur and Doti

Target Population: People Living with HIV and AIDS (PLHIVs).

Project Period: 16 July, 2016 to 15 July, 2017.

Funding Agencies: Global Fund through Save the Children International.



LINKAGES

HIV care and support services among PLHIV in Nepal

Project Goal: Increased demand generation and availability of comprehensive prevention, care and treatment services, including reliable coverage across the continuum of care for KPs.

Working Districts: Five Development Regions (Kathmandu, Bhaktapur, Jhapa, Morang, Sunsari, Kapilvastu, Rupandehi, Makwanpur, Chitwan, Kaski, Banke, Dang, Kailali and Kanchanpur) of Nepal.

NAP+N has been implementing project on “HIV care and support services among PLHIV in Nepal” supported by fhi360. Since 2005, this program is continuously going on. NAP+N has conducted training need assessment and various need-based training and capacity building workshops including network and project management, evidence based advocacy and management information systems. NAP+N also serves a crucial role in increasing the capacity of member organizations in the districts. NAP+N has also coordinated with the Saath saath project implementing partner agencies in the districts to improve coordination efforts in and resource allocation for HIV programming in the districts.

Target Population: People Living with HIV and AIDS (PLHIVs), Secretariats of Central and Five Development Regional Chapters of NAP+N.

Project Period: 1 October, 2016 to 31 December, 2017.

Funding Agencies: fhi360.



MATA RESEARCH

Monitoring of Access to Treatment for PLHIVs in Nepal.

Project Goal: To improve knowledge and understanding of issues related to PLHIV's access to treatment, care and support services in the region and use it for evidence-based advocacy and to streamline issues of Hepatitis C as co-infection and sexual and reproductive health as major issues among WLHIV in Nepal.

Working Districts: Five Development Regions of Nepal and Research is going on in Sunsari, Jhapa, Morang, Chitwan, Kathmandu, Lalitpur, Bhaktapur, Kavre, Nawalparasi, Kaski, Banke, Bardiya, Achham, Kailali, Kanchanpur and Doti districts.

NAP+N has been implementing project on "Monitoring of Access to Treatment" supported by Asia Pacific Network of People Living with HIV and AIDS. Which is a research based Monitoring Access to Treatment in Asia (MATA) in Nepal and Advocacy and capacity building on Hepatitis C, HIV Co-infection and Sexual Reproductive Health Rights (SRHR). Community Access to Treatment (CAT) project has completed its first phase and entered into monitoring phase of research and is part of the Global Fund regional grant whereas the Hepatitis C and SRHR is funded by Robert Carr Foundation both of the projects are managed by APN+.

This project has also conducted many meetings, community focused group discussions, surveys which is related to the livelihood of PLHIV.

Target Population: People Living with HIV and AIDS (PLHIVs), Hepatitis C co-infected individuals.

Project Period: 16 July, 2016 to 15 July, 2017.

Funding Agencies: Robert Carr Foundation both of the projects are managed by APN+.

EVENTS

Some pictures of "Third Sharan Chettri Award"



Some pictures of Training/Orientation





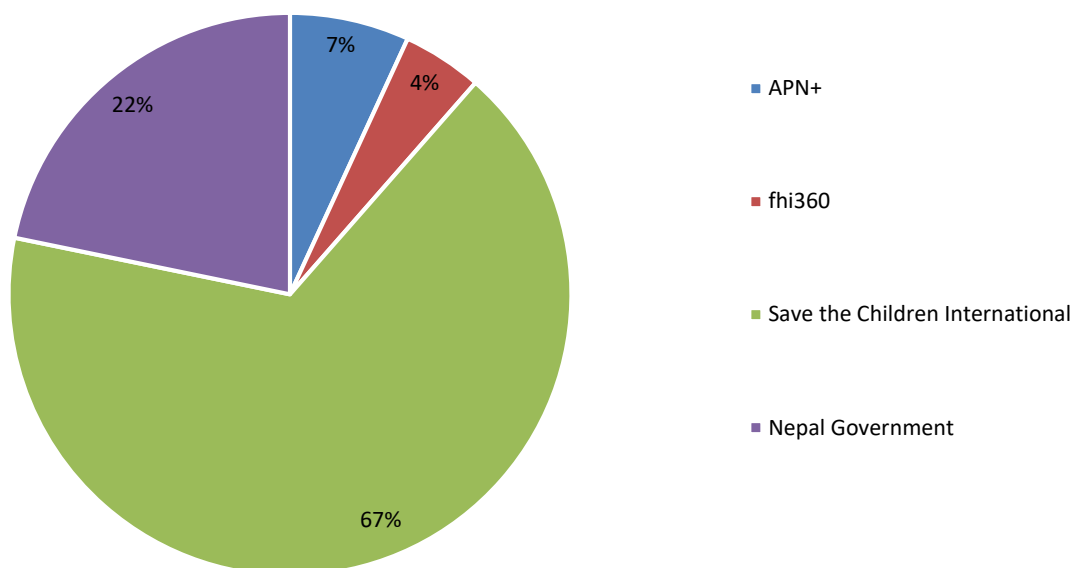
Some pictures of Candle Light Day



FUNDING AGENCIES

- ❖ Asia Pacific Network for People Living with HIV and AIDS (APN+)
- ❖ fhi360
- ❖ Government of Nepal
- ❖ Save the Children International

NAP+N Donorwise Fund Expenses FY 2073/74



OUR PARTNERS

Arun Plus Mahila Misrit Sarokar Kendra,
Sankhuwasabha

Asha Jyoti Sayogi Samuha, Rupendehi

Aafno Nepal, Sarlahi

Asha Milan Samuha, Parsa

Baitadi Plus, Baitadi

Baitadi Plus, Darchula

Bajhang Plus, Bajhang

Bajura Plus, Bajura

Bishwasilo Aasha, Dhanusha

Chitwan Plus, Chitwan

Chhahari Mahila Samuha, Gorkha

Community Support Group, Baglung

Community Support Group, Syangja

Community Support Group, Tanahun

Community Support Group, Parbat

Dadeldhura Plus, Dadeldhura

Dailekh Plus, Dailekh

Dang Plus, Rukum

Dhading Plus, Dhading

Dhading Plus, Lamjung

Dharan Positive Group, Sunsari

Dharan Positive Group, Dhankuta

Dhaulagiri Positive Group, Baglung

Friend's of Hope, Kaski

Godawari Plus, Kailali

Hamro Jeevan Plus, Gulmi

Helping Hands Nepal, Bardiya

Hope Nepal, Banke

Karnali Plus, Kalikot

Laligunras Ekta Samaj, Doti

Lava Kush Ashram, Jhapa

Lava Kush Ashram, Illam

Life Vs Addiction, Sindhupalchowk

Lumbini Plus, Nawalparasi

Mahila Plus, Surkhet

Mahottari Paramarsha Sewa Kendra, Mahottari

Makwanpur Positive Group, Makwanpur

Pyuthan Plus, Pyuthan

Samarpan Sahayog Samuha, Kapilbastu

Maya Nepal, Rautahat

Nava Asha, Kanchanpur

Nirnaya, Myagdi

Pratibaddha Sahayog Samuha, Palpa

Prayash Mahila Samuha, Udayapur

Rolpa Plus, Rolpa

Sakriya Plus Nepal, Kavre

Sandesh Sahayog Samuha, Argakhachi

Sankalpa Sahayogi Samuha, Syangja

Shakti Milan Samaj, Kathmandu

Sharada Plus, Salyan

Sindhuli Plus, Sindhuli

Sparsha Nepal, Morang

Sparsha Nepal, Saptari

Suruwat, Bhaktapur

The Creative Group, Kathmandu

The Creative Group, Siraha

Trisuli Plus, Nuwakot

Women Forum, Kaski

Wisdom Nepal, Jajarkot

www.napn.org.np

Head Office

Samakhushi, Ring Road, Kathmandu,
Nepal.

Contact No.: +977-1-4380942/4362939

E-mail: info@napn.org.np

Website: napn.org.np

Regional Offices

Eastern Development Regional Office, Dharan,
Sunsari, Nepal

Central Development Regional Office

Hetauda, Makwanpur, Nepal

Western Development Regional Office

Pokhara, Kaski, Nepal

Mid-western Development Regional Office

Nepalgunj, Banke, Nepal

Far-western Development Regional Office

Dhangadi, Kailali, Nepal



NAP+N